

# life|ware™

DIGITAL ENTERTAINMENT  
AND AUTOMATION™



## Do More with Life|ware 2.0

Life|ware™ is the ground-breaking software solution that allows you to seamlessly merge control of your home with your world of digital entertainment.

### Digital Entertainment

With Life|ware 2.0 and Windows Vista® Media Center, you have your entire music collection—complete with album art—all on screen. Enjoy slideshows of your digital photos, schedule and record your favorite television programs, call up your home videos and watch DVDs.

### Home Automation

You also can control your home's lighting system, thermostats and security systems, distribute music throughout the house, enact homeowner-defined Lifescenes™ and share media across your entire network. And you can do it all with the same remote control—the same six buttons—and the same famously graceful look, navigation and feel of Media Center.

What's more, Life|ware lets you enjoy the experience anywhere and everywhere—through your TV with a Media Center PC, using an Xbox 360™ as a Media Center Extender, from your home or office PC or laptop, from a Life|point™ touch panel, or from a wireless device like an Ultra Mobile PC.

With the power of digital entertainment and the convenience of home control at your fingertips, Life|ware lets you do more.

### Features

- 100% digital experience
- Share digital content across your home network
- Distribute audio where you want it, when you want it.
- Easy navigation for all users
- Choose how you want to interact with Life|ware—via mouse, keyboard, remote, or touch panels
- Seamless integration with Microsoft® Windows Vista® Media Center
- Multi-vendor hardware support gives you more choices for PCs and subsystems
- Schedules for common home control and security tasks
- Lifescenes set a mood using all of your home's systems
- Extend the experience around the house using Xbox 360™ as Media Center Extenders
- Life|ware is completely scalable to meet your changing needs—big or small



# life|ware™

DIGITAL ENTERTAINMENT  
AND AUTOMATION™

# Life|ware™ 2.0 Technical Specifications



## System Requirements

**Operating System** – Microsoft® Windows Vista® Premium or Ultimate operating system

**Processor** – 2 GHz Intel® Pentium® 4 Processor (or comparable)

**Memory** – 1 GB RAM minimum, 2 GB RAM recommended

**Data Input** – 10/100/1000 Base-T Ethernet

**Remote Control** – any Media Center-ready remote

## Integration Features

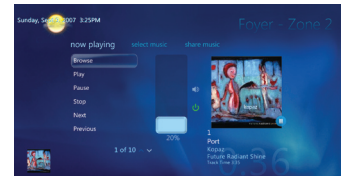
- Installation in minutes without complex initial setup
- Automatic discovery of Web Services-enabled control systems
- Variety of configuration tools for a range of technology experiences—from wizard-based walkthroughs to robust developer tools
- Simple configuration and programming tools reduce on-site time, increases productivity and reduces errors
- Advanced testing capability using the Life|ware Control Panel reduces callbacks after installation
- Easily customizable for each customer using scripts, menus, schedules, and Media Center plug-ins
- Scalable for any size installation
- Short learning curve for installers
- Standardized multi-vendor hardware support lets you offer customers more choices for audio, lighting, security, HVAC devices and more—all through configuration, not programming
- Product-specific cut sheets and work sheets for all supported subsystems

## Support Features

- Remote log in for off-site troubleshooting, reducing on-site calls and increasing productivity
- Complete system logs for faster troubleshooting, reducing callbacks
- Comprehensive system documentation and certified dealer-only support website, [www.lifewareuniversity.com](http://www.lifewareuniversity.com)
- Complete Life|ware Certification training



Main



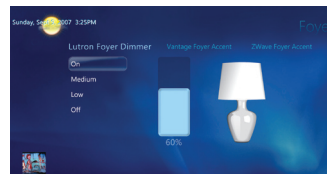
Audio Sourcing and Distribution



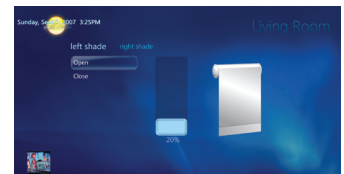
Thermostat



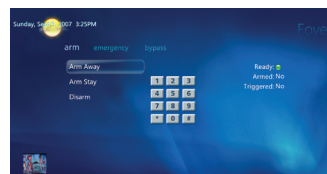
Weather Forecast



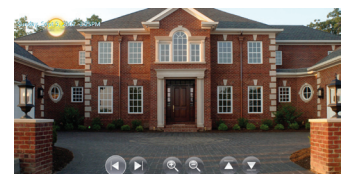
Lighting Control



Shades



Security



Cameras

## Awards:



Best User Interface



life|ware™

DIGITAL ENTERTAINMENT AND AUTOMATION™